

## UPDATE TO THE REPORT

### HIGHWAY 3: TRANSPORTATION MITIGATION FOR WILDLIFE AND CONNECTIVITY

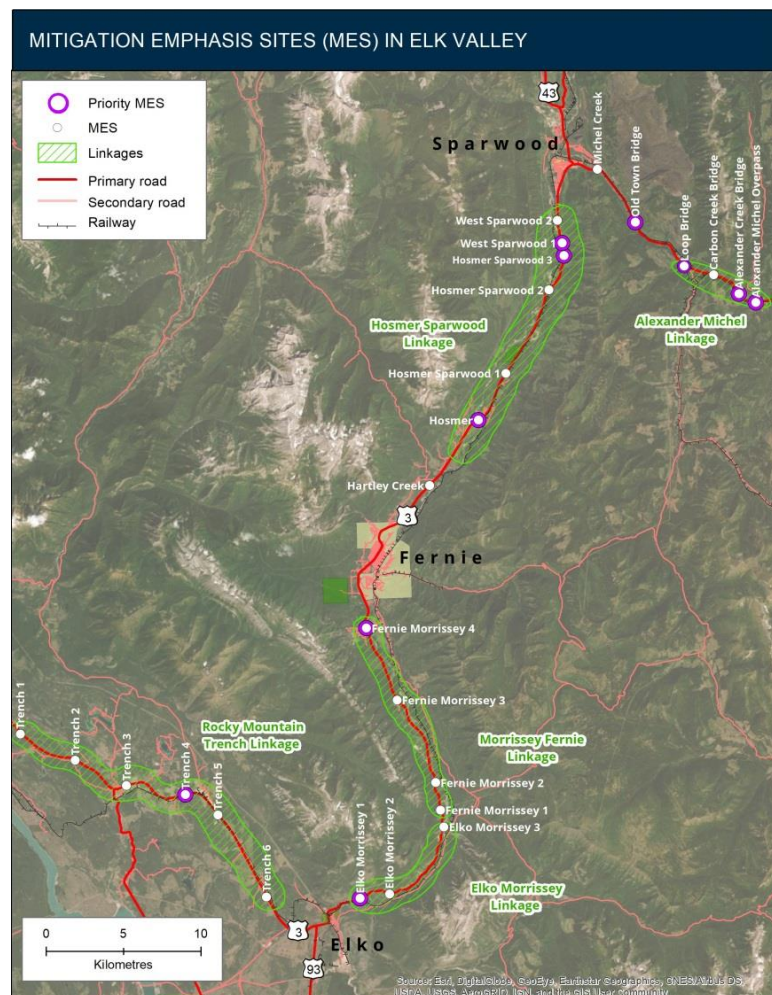
**Background:** Collisions between vehicles and wildlife create a multi-million-dollar human safety and wildlife conservation risk in British Columbia. Highway 3 from the BC provincial border to Cranbrook is an especially severe collision area, with high and increasing traffic volumes contributing to 1000+ wildlife collisions annually. Investments in reducing wildlife collisions are often paid off quickly due to significant costs saved through reductions in collision payouts. Here we provide a collaborative and evidence-based report that lays out a plan for mitigation in southeast BC. This report shows that mitigation is strategic, maximizes return on investment, and confers benefits to people and wildlife.

**Opportunity:** We can improve wildlife and human safety through implementation of recommended mitigation measures (such as overpasses, underpasses and fencing) at key sites along Highway 3.

**Approach:** Using wildlife datasets, stakeholder engagement and field visits we prioritized mitigation sites.

- 1) We used multiple datasets, including wildlife GPS collars, expert opinion, and citizen science to identify 26 Emphasis Mitigation Sites (MES). Linkages represent areas that should be paired with fencing.
- 2) 30 stakeholders identified and weighted prioritization criteria. Experts scored each MES.
- 3) The top 10 priority sites for mitigation are outlined in purple on the map to right (see a larger version in report).

**Next steps:** The Highway 3 amendment report represents the platform for the BC Ministry of Transportation and Infrastructure, the BC Ministry of Forests, Lands and Natural Resource Operations and Rural Development, the Ktunaxa Nation and Elk Valley stakeholders to advance mitigation measures along Highway 3.



Thank you to **Vancouver Foundation, TECK, Patagonia Environmental Grants Fund of Tides Foundation** and **Chawkers Foundation** for supporting the RoadWatchBC Program.

Visit [www.roadwatchbc.ca](http://www.roadwatchbc.ca) for information or contact Tracy Lee, Miistakis Institute, 403-440-8444